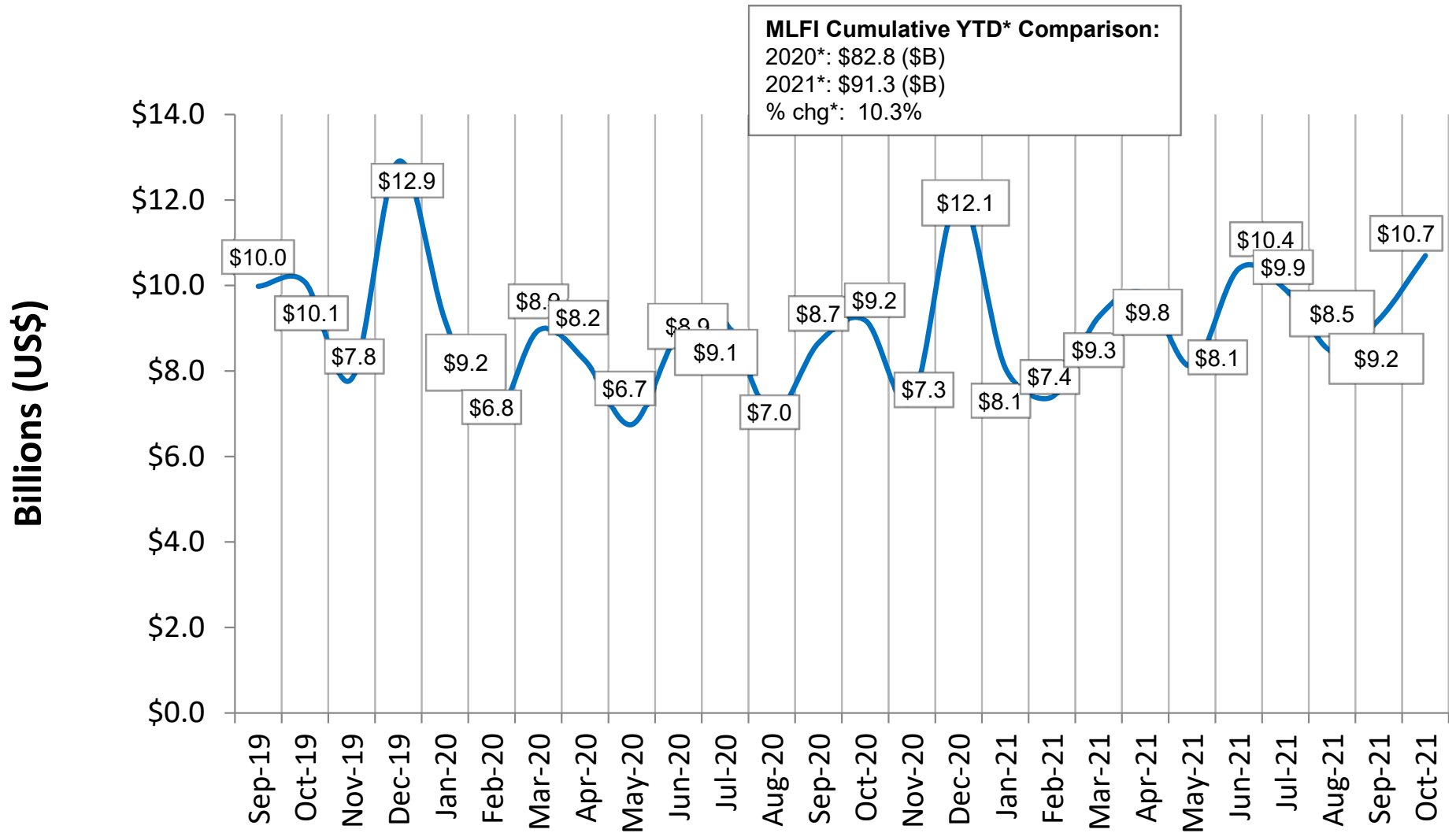


# Monthly Leasing & Finance Index

Oct 2021

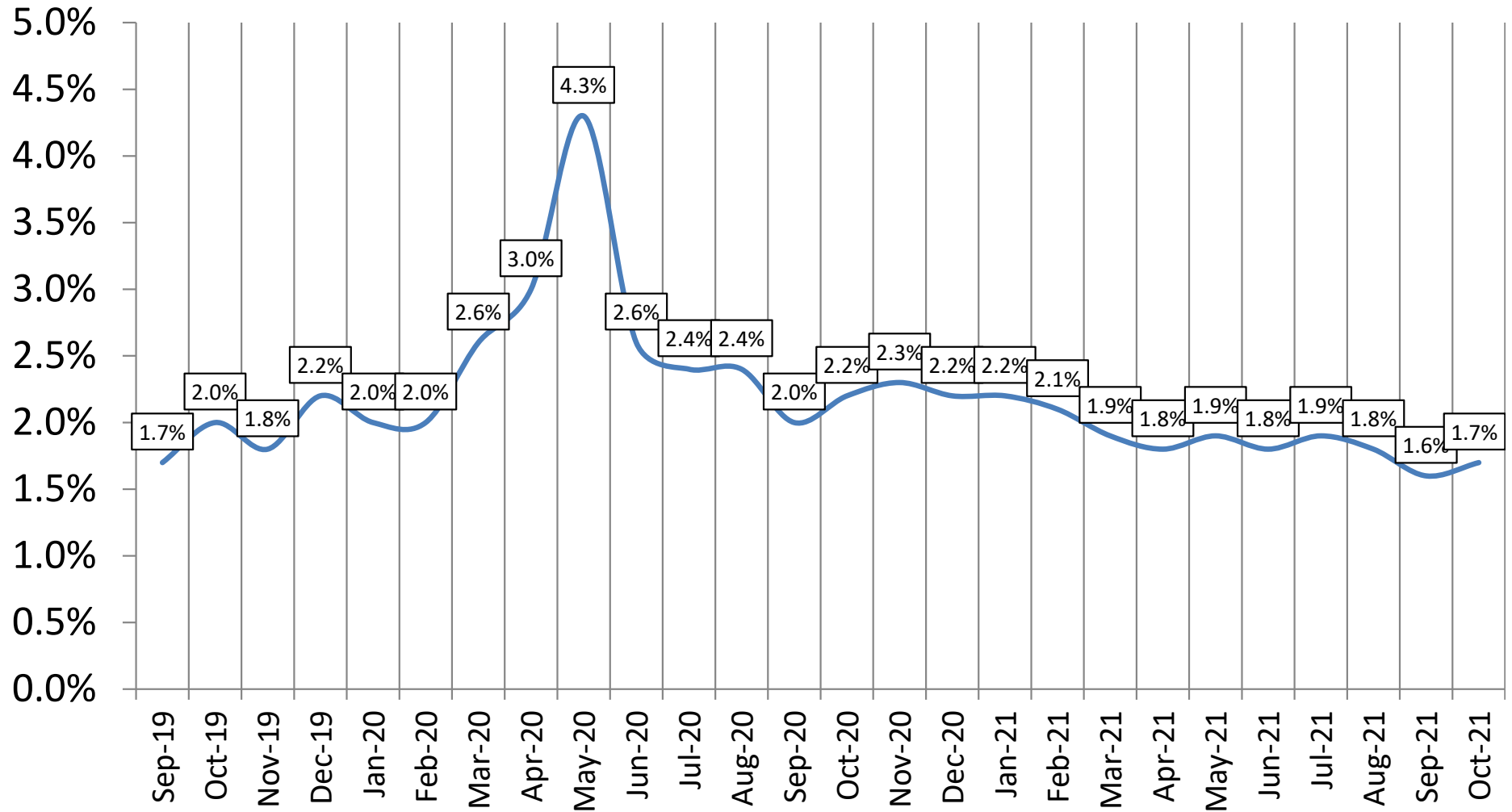


# MLFI-25 New Business Volume (Year-Over-Year Comparison)

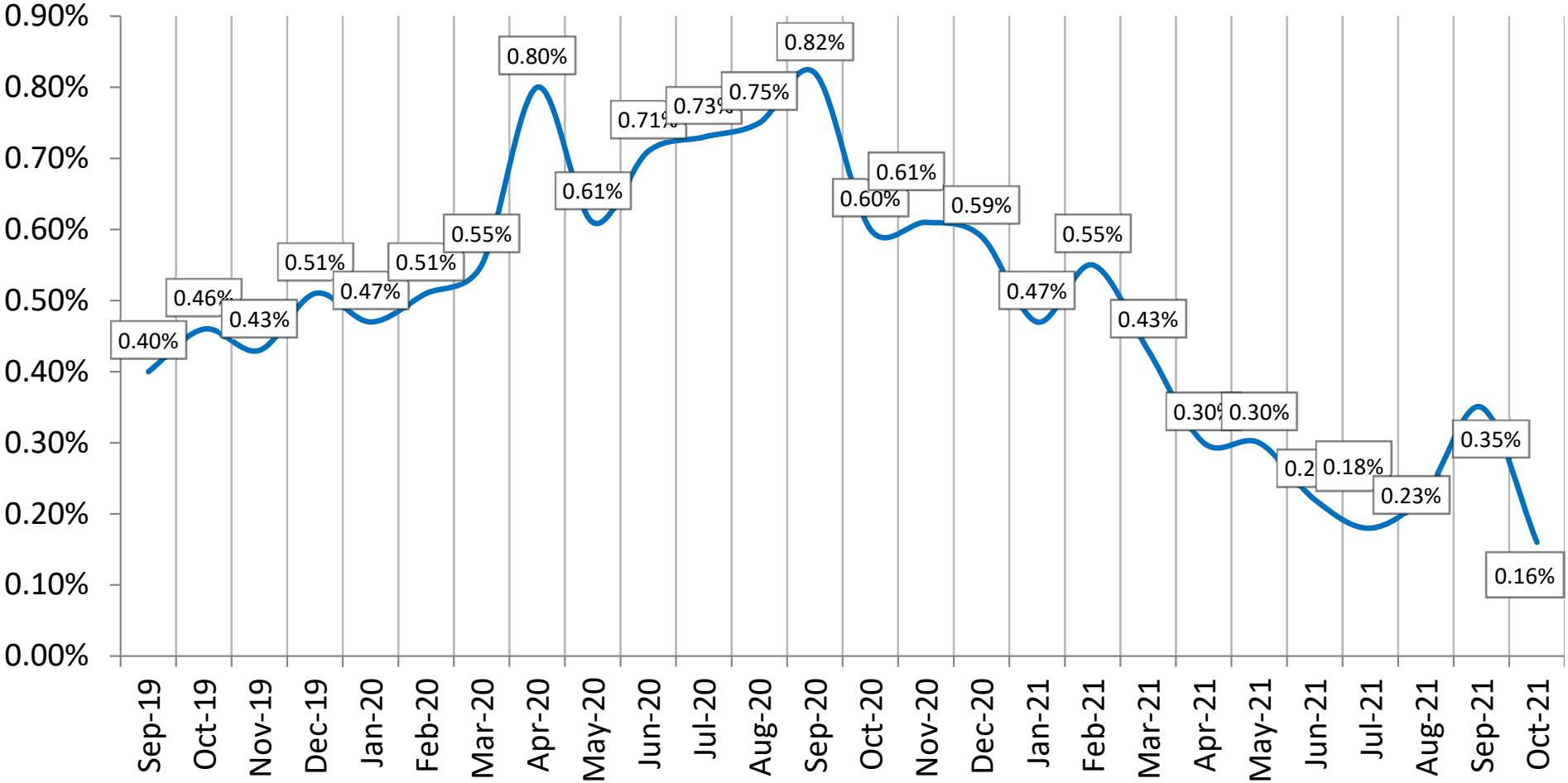


\* YTD NBV numbers will not match the numbers from the chart due to rounding

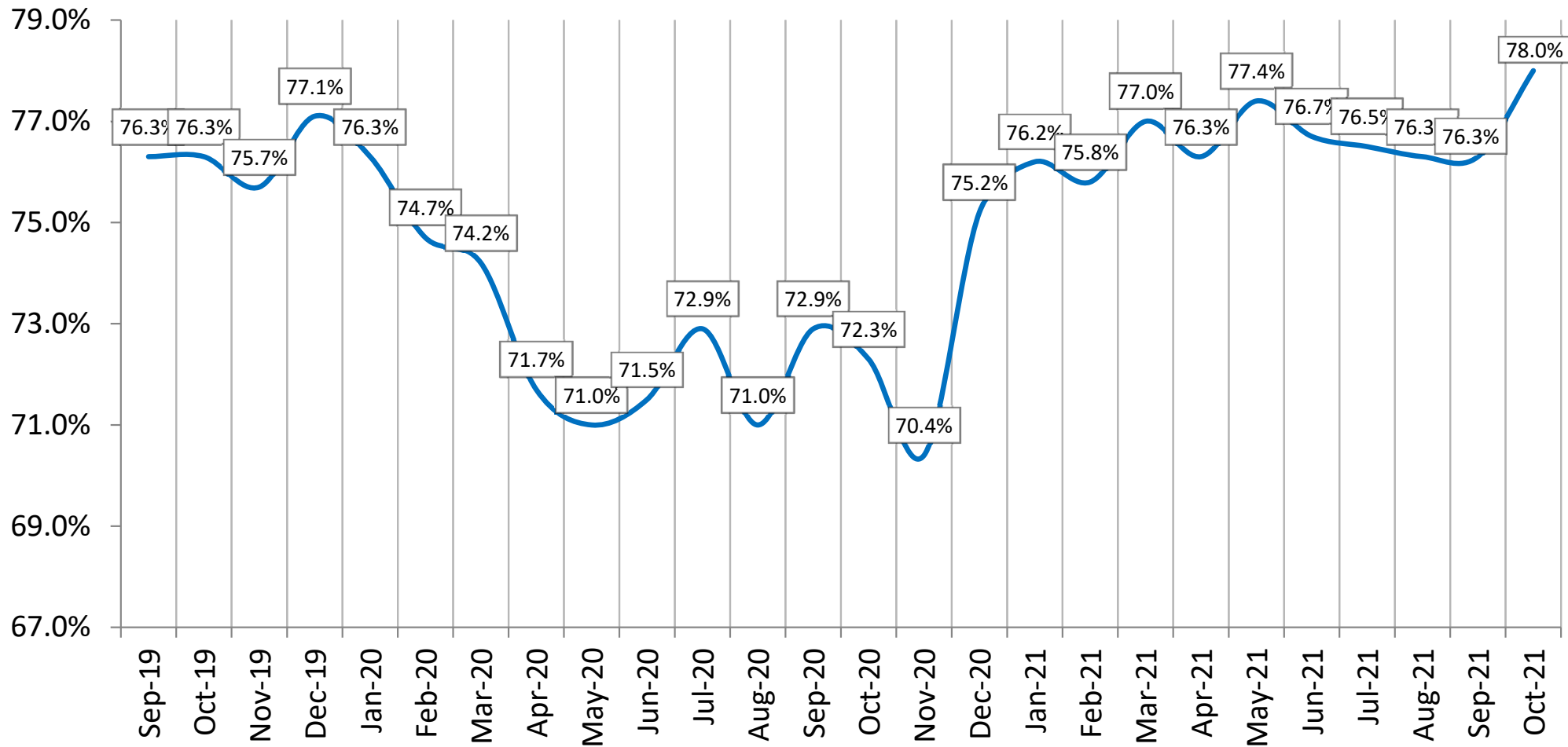
# Aging of Receivables Over 30 Days



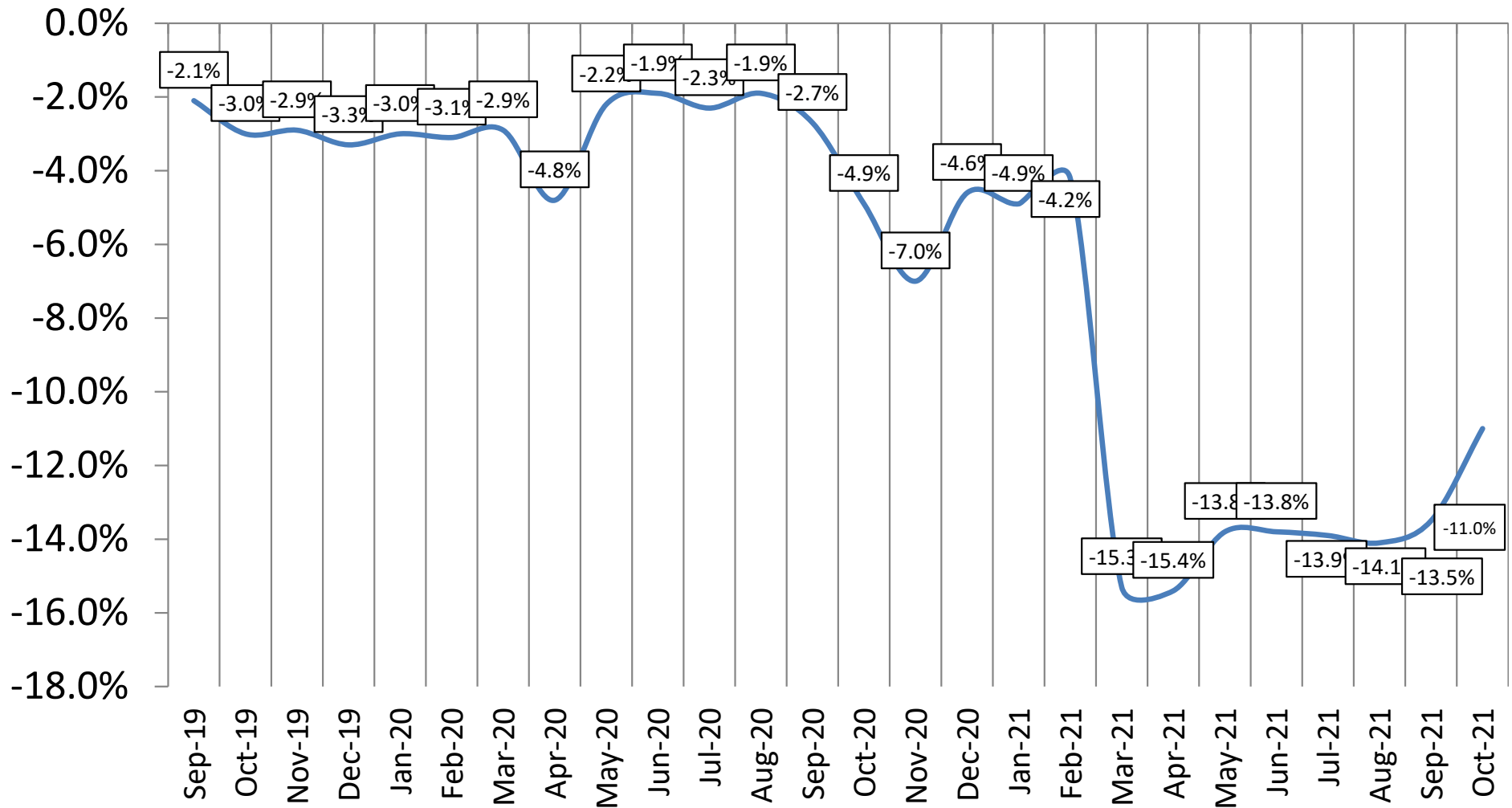
# Average Losses (Charge-offs) as a % of Net Receivables



# Credit Approvals As % of All Decisions Submitted



# Total Number of Employees % CHG YOY



*Note: During 2021, headcount decreased due to significant downsizing at an MLFI reporting company.*